

KEYSTONE
**ENGINEERING
& CONSULTING**

BAREFOOT TRACE REHABILITATION PROJECT

Project Summary: #5

Reporting Period: 10-26-2024 through 11-08-2024

St. Johns County Permit # 12411351

Project Engineer: Jason Boatright

Prime Contractor: R.L. James

Field Superintendent: Chad Edwards

PROJECT LOCATION

6240 SR-A1A, Saint Augustine, Florida 32080

The eight assigned employees continued to make steady progress during this two-week reporting period, beginning work on the 16 and 17-stack balconies while completing the 01-west balconies and the walkway activities.

Keystone personnel were called to the project site on 11/01/2024 and 11/06/2024 to paint out repair areas that were experiencing reinforcing steel corrosion on the 16-17-stack balconies and the parking deck respectively. These markings have rectangular geometry and give the contractor clearance to start excavating these areas.

While commencing work on the south side of the building, the crew continued to complete work on the 01-west balconies, performing excavations, and casting concrete repair areas.

RL James is scheduled to commence work on the parking deck on 11/11/2024, where they'll begin demolishing areas marked out by the project engineer while grinding the existing coating off the deck.

Keystone Engineering and Consulting is scheduled for 11/14/2024 to complete a pre-pour inspection on repairs on the 16-17-stack balconies to confirm that the RL James crew is following ICRI guidelines and the engineered specifications of the project resulting in approval to cast.



Cocoa Beach Office

25 North Brevard Avenue, Suite 101
Cocoa Beach, FL 32931

(321) 454-7300

info@KeystoneEngineeringPE.com
www.KeystoneEngineeringPE.com



Daytona Beach Office

434 Halifax Avenue, Suite 3
Daytona Beach, FL 32118



Figure 1. Photo of 01-West Stack with RL James Employees Working.



Figure 2. Column Repair Area. Unit 401.



Figure 3. Square Patch Area Painted by Keystone. Unit 316.

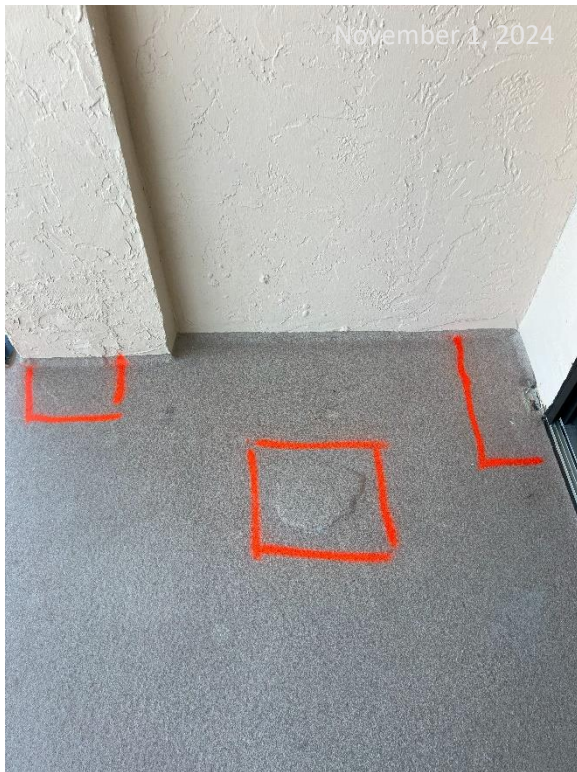


Figure 4. Painted out Repair Areas. Unit 217E



Figure 5. RL James Employee Removing Failed Sealants.



Figure 6. Parking Deck Areas Marked by Keystone.



Figure 7. RL James Employee Working on Unit 217W.



Figure 8. East Elevation View of Swing-Stages at 16 and 17-Stack Balconies.